



## **Promoting ALAA**

**Richard Pankey**

ALAA Past President - California State Representative

dick.pankey@amlands.org

When talking with rockhounds, mineral and gem society members, and members of the general public at gem and mineral shows in California, I have been overwhelmed with the lack of awareness about the American Lands Access Association: what it is and what it does. I am glad to say that most/many of the Contra Costa M&GS (my society) members have heard about ALAA, remember me talking about it and reading my newsletter articles about ALAA. But the "awareness curve" drops off quickly with the other affiliated member rockhounds to miniscule with unaffiliated rockhound. This spring I had the opportunity to start to remedy the lack of ALAA awareness; at least at 4 society shows here in northern California. A start!

Betty and I exhibit our cases at shows around our area, the San Francisco Bay area.



For many years now in February and March we go to 4 local society shows. Betty often demonstrates making Round Wire Rings with a Bead. And I sit around or walk the show. Not this year. I requested a table from the show chairmen's to setup an "ALAA Information Table" and was enthusiastically accommodated. I got a stack of the American Lands Access Association tri-fold pamphlets and a stack of applications forms along with a 2' X 3' cork board titled "American Lands Access Association Protecting the Public Lands for the People". I was ready for my ALAA Information Table. I setup my table at the 4 shows -- Vallejo G&MS, Mother Lode Mineral Society, Santa Clara Valley G&MS, and Calaveras G&MS. I also



had a display of Rockhound Stickers and emblems for sale. Their bright yellow color attracted a lot of attention was a good segue to talk about rocks, collecting and collecting areas on public lands. I didn't have a script but I talked about management of public lands, BLM, USFS, challenges to access, what ALAA does, how an interested person can get involved, and introduce them to the ALAA web site. If they showed interested I gave them an application and invite them to join. Most attendees expressed interest in ALAA

*Continued on Page 12.....*

Material from ALAA Newsletters may be duplicated for non-commercial purposes with appropriate credits. For commercial use, individual authors must be contacted for approval. Articles lacking bylines have been generated by the bulletin staff. Direct other questions to the Editor at: editor@amlands.org

# **CALIFORNIA NEWS**

**Jennifer Haley**

California State Director

jennifer.haley@amlands.org

**BLM-Desert Advisory Council Meeting  
Barstow, California**

The BLM held a field tour on June 28, 2019, followed by a formal all day meeting of the BLM California Desert District Advisory Council (DAC), June 29, 2019 in Barstow, CA. Due to lack of attendance of the DAC chairman and a few council members, the DAC did not have a quorum and could not conduct official business.

The council of 10-15 members was created to represent stakeholder interests in public land management, such as conservationists, outdoor recreationists, ranchers, industry officials, state and local government officers, academics, and others. The DAC's purpose is to advise the BLM officials on the public input from the areas of Barstow, El Centro, Needles, Palm Springs, and Ridgecrest.

Although I can appreciate the DAC's candidness about their current dysfunction as a council and admitting their failure to function as they should in recent years, I was shocked to hear the details. Council members had not been given copies of operating regulations to understand how to run the public meetings and did not know what their responsibilities are in between the meetings. The DAC is supposed to hold 3-4 public meetings annually, however there have only been 4 meetings within the last 3 years.

Years ago, the BLM field reports were given to the council prior to the public meetings, however that has not been happening in recent years. The council only received copies of the reports the morning of the Barstow meeting which was cause for lack of preparedness in the understanding of the BLM topics listed on the agenda. The council has now requested the reports be sent to them 2 weeks before the meetings. Although legally the DAC has the authority to announce the date for a public meeting only 72 hours in advance, the council has now requested the reports be made available on the DAC website two weeks prior to the meetings so the public has time to review the reports. The DAC must wait on approval from Washington D.C., for all meeting dates with the public, including approval for what is on the council's agenda and the topics for public comment. The DAC is hoping they can get approval for a public meeting prior to Dec 2019.

The council was cautioned by some of its own members not to make up their minds ahead of public comment about how they plan to vote, stressing the importance of public input and public consensus. And it was advised county supervisors from counties receiving Payments In Lieu of Taxes (PILT's) from the BLM, should not be on the DAC due to conflict of interest.

WEMO- The ALAA submitted a 36 page protest regarding the WMRNP\_LUPA\_Final SEIS, on behalf of Recreational Rockhounding. The Washington D.C.- Record of Decision (ROD) regarding the WEMO will most likely will be released Oct 2019. Following the ROD, the BLM will begin to update old and new signage. BLM stated the routes can be reworked, new routes and ones left out or over looked, can be requested, but the

***Continued on Page 3.....***

..... **Continued from page 2**

public has to go through BLM. The BLM stated they do have a say in the National Forest provisions for new routes.

I attended the Barstow meeting on behalf of the ALAA, CFMS and Recreational Rockhounding. My opening comments began with the US Department of the Interior's, statement on their website.

"Increasing access to outdoor recreation opportunities, on our nation's public lands, is a top priority. Outdoor recreation opportunities, provide physical and mental health benefits, and allows Americans to more fully experience our beautiful public lands and waterways... for an all-American outdoor experience."

I stated the Recreational Rockhounding clubs are, an All American outdoor experience., and we have valued our historic collecting and earth science study areas for close to 80 years, especially in southern California.

I stated we prefer to have the specific wording, Recreational Rockhounding, included in the various BLM and Dept of the Interior website information, next to the other recreational activities. The Department of the Interior recognizes, and defines, Recreational Rockhounding, as does BLM. However, you have to look for it, and type in the words, Rockhounding, to find it. I don't think this is intentional, I think our historical American hobby of 80 plus years has just been over looked.

I encourage all of you to get more involved in the public land meetings in the areas you live, and in the areas where you collect. Not all Recreational Rockhounding societies and individuals use the same route numbers even though the named destination areas are the same, for example, the Cady Mountains. The Western Mojave is an excellent example of this because the desert is so large. There are lots and lots of routes and not all of you use the same ones. This was evident when ALAA received route numbers from some of you for the WEMO. This is why it is crucial all of you document the routes you use so ALAA can be sure your favorite routes are included in future public lands planning. Please stay involved, and if your society hasn't been involved yet, ask ALAA how. It's easy, and your help is needed. We all have a future to fulfill for Recreational Rockhounding. We can't do it without you.

## **NEWSLETTER DEADLINE**

Articles for the NEWSLETTER are DUE to the Editor by the  
**10th of January - 10th of April - 10th of July - 10th of October**

For inclusion in each Quarterly Newsletter

Please send articles to: **editor@amlands.org**

Please send articles in plain text, MS Word (.doc)

Pictures in jpg format at not less than 96 dpi or more than 200 dpi.

***Please do not send articles in PDF format.***

**Concerns or questions on article format please contact the editor at  
editor@amlands.org**

Permission to Reprint All or Any Part of this Newsletter is Hereby Granted,  
Provided, Credits and Citations are Maintained.

# Shirley Leeson, ALAA President

president@amlands.org

## I NEED YOUR HELP, please

### 1st...

If you have reached my President's Message, I hope that means you have read Dick Pankey's article on the front page/page 1. Please go back and read it again. It's important that we reach all the clubs and their members.

The only way we, ALAA, can do that is for those of you who receive this Newsletter as 'club representatives' pass the information on to your members and beyond. We need you to copy the newsletter and pass it around at your meetings, forward the ALAA Newsletter to surrounding clubs who may not belong to ALAA.

We have learned at government meetings the first thing they ask is how large, in numbers, is your organization, how far does it extend. **THERE IS STRENGTH IN NUMBERS** and right now we are lacking in those numbers.

### 2nd...

Pages 5 and 7 have the field trip forms we are asking each club who belongs to ALAA to fill out. One form is for public lands, and one is for private property or claims. One for your club, and a copy to ALAA for our data base. This information will not be shared. It will be compiled and when a government agency says they have no data on recreational rockhounds using the public lands in their area, we will have accurate data to dispute their claims. **Consider this a partnership with your club and ALAA.** The INFORMATION is also available on the WEBSITE [www.amlands.org](http://www.amlands.org)

### 3rd...

ALAA will have it's annual meeting in Quartzsite, Arizona. I hope you are planning on being there. Our interest is between January 15, 2020 through January 19, 2020. **We will have the location, day and time of our meeting in the 4th Quarter Newsletter and at our website: American Lands Access Association. [www.amlands.org](http://www.amlands.org)**

Your 2019 recycled ALAA President

**Shirley Leeson**, now residing deep in the heart of Texas and lovin' it.

**ALAA – DATA BASE OF COLLECTING SITES  
BY STATES**

**PRIVATE COLLECTING SITES**

NAME OF SOCIETY/CLUB: \_\_\_\_\_

Address \_\_\_\_\_ City \_\_\_\_\_ State \_\_\_\_\_  
Zip \_\_\_\_\_

Field Trip Leader:

Name: \_\_\_\_\_ Email: \_\_\_\_\_

Phone: \_\_\_\_\_

Collected Material: \_\_\_\_\_  
\_\_\_\_\_

Name of Company, Ranch or Owner: \_\_\_\_\_

General Manager: \_\_\_\_\_

Contact Person: \_\_\_\_\_

Liability Insurance Requirement: Yes: \_\_\_\_\_ No: \_\_\_\_\_

Location (Address): \_\_\_\_\_

GPS: \_\_\_\_\_

Distance from your Club: \_\_\_\_\_

Frequency of leading trips to this location: \_\_\_\_\_

Number of attendance: \_\_\_\_\_

Day trip or Overnight: \_\_\_\_\_

Closest Town: \_\_\_\_\_

Groceries, gas, restaurants, motels, hardware stores or other impact on the town:

\_\_\_\_\_  
\_\_\_\_\_  
\_\_\_\_\_  
\_\_\_\_\_  
\_\_\_\_\_  
\_\_\_\_\_

Other Comments for this site:

\_\_\_\_\_  
\_\_\_\_\_  
\_\_\_\_\_  
\_\_\_\_\_

Date Filled in Form: \_\_\_\_\_

Please keep copy for your files, send a copy to [fieldtrip@amlands.org](mailto:fieldtrip@amlands.org)

# News from Utah

**Jack Johnston**

jack.johnston@amlands.org

With my and my wife's health deteriorating and not being able to get out very much I contacted Doris Quinn, who lives in Castle Dale, Emery County, to attend the Public Lands Council meeting in Castle Dale on Tuesday 7/2/2019. Doris filed the following report.

<https://www.utah.gov/pmn/files/509175.MP3> Recording of the meeting.

Quote: -- but I always like to make things easy--so at minute 17:30 you'll hear the representative from the Division of Oil, Gas & Mining begin to address the lands council. He talks about rockhounding in his report--it's short he finishes right around 19:30 on the recording.

I address them at about 1:10:00 and you'll hear several comments made after I talk to them. You'll hear Ray Petersen say he's spoken with you, Larry Ellertson comments he talked with you and passed you off to Ray. Rod Player the chairman of the PLC talks about a tourism subcommittee for rockhounds and asks the BLM rep about collecting. Then Mark H Williams a local from Castle Dale talks about gathering spots and some collecting which just happened recently.

All in all, it was a good conversation. Thanks for letting me represent you.

At the next Emery County PLC meeting I will have maps and lists of closed sites and roads to be presented by Doris.

I hope I am able to get people in different areas as well qualified as Doris to represent us throughout the State.



Left Map:  
Grey Squares are  
Mining Claims in  
Emery County Utah.

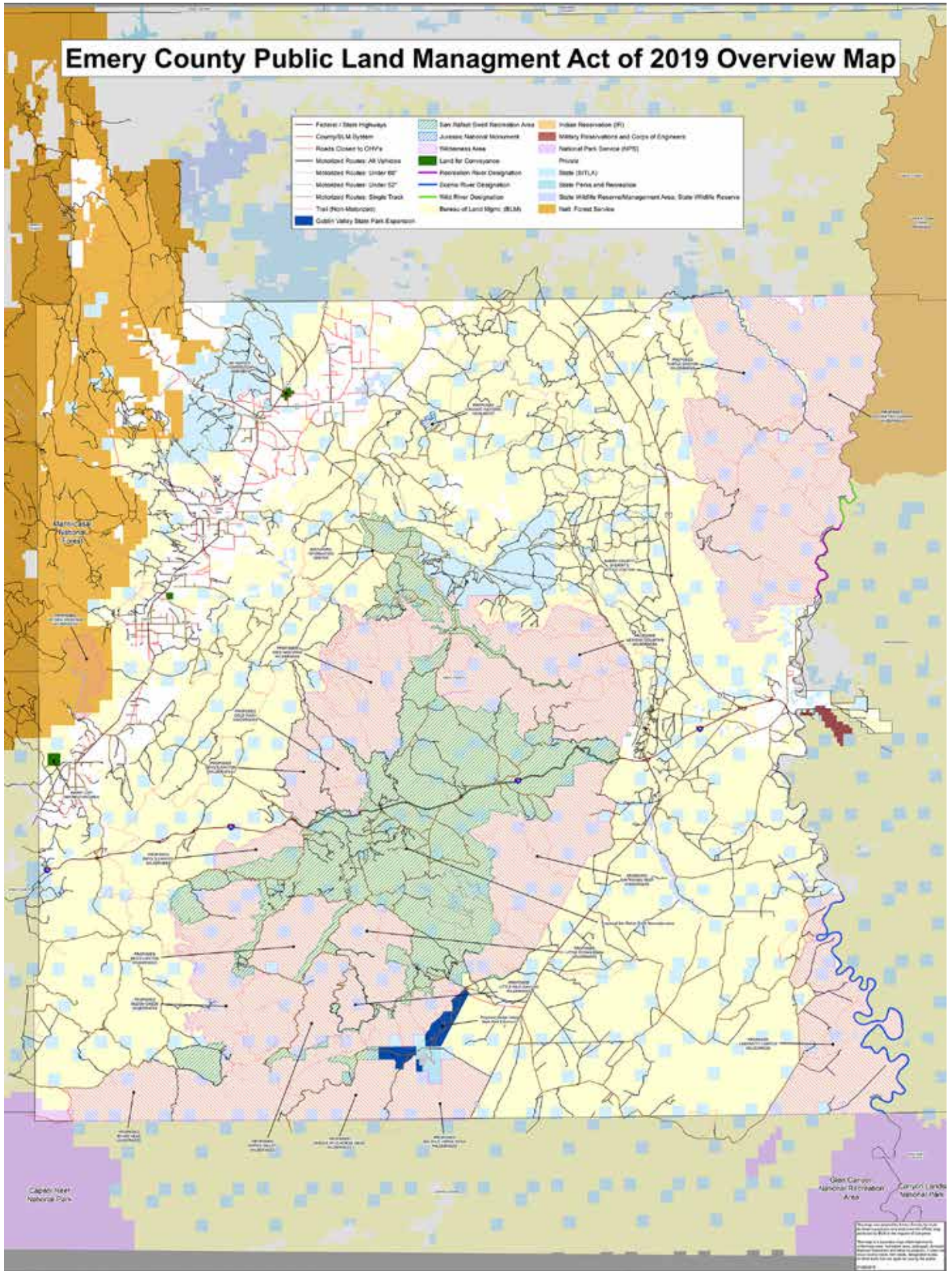


Right Map:  
Rockhounding Sites in  
Emery County Utah.

***Continue Maps on Page 7.....***

# Emery County Public Land Management Act of 2019 Overview Map

Federal / State Highways	San Rafael Swast Recreation Area	Indian Reservation (PI)
County (C) M System	Juvenile National Monument	Military Reservations and Corps of Engineers
Roads Closed to OHVs	Wilderness Area	National Park Service (NPS)
Motorized Routes - All Vehicles	Land for Conveyance	Private
Motorized Routes - Under 90"	Recreation River Designation	State (STL)
Motorized Routes - Under 60"	Scenic River Designation	State Parks and Recreation
Motorized Routes - Single Track	Wild River Designation	State Wildlife Reserve/Management Area, State Wildlife Reserve
Trail (Non-Motorized)	Bureau of Land Mgmt. (BLM)	Nat. Forest Service
Cabin Valley State Park Expansion		



**ALAA – DATA BASE OF COLLECTING SITES  
BY STATES  
GOVERNMENT COLLECTING SITES**

NAME OF SOCIETY/CLUB: \_\_\_\_\_

Address \_\_\_\_\_ City \_\_\_\_\_  
State \_\_\_\_\_ Zip \_\_\_\_\_

Field Trip Leader:  
Name: \_\_\_\_\_ Email: \_\_\_\_\_ Phone: \_\_\_\_\_  
Collected Material: \_\_\_\_\_  
\_\_\_\_\_

FOREST SERVICE \_\_\_\_\_ GRASSLANDS \_\_\_\_\_ BLM \_\_\_\_\_  
Did you contact District Manager? Yes: \_\_\_\_\_ No: \_\_\_\_\_ Contact Name: \_\_\_\_\_

Did you have to register your group? Yes: \_\_\_\_\_ No: \_\_\_\_\_

Routes to the exact collecting site: \_\_\_\_\_  
\_\_\_\_\_  
\_\_\_\_\_  
\_\_\_\_\_  
\_\_\_\_\_  
\_\_\_\_\_  
\_\_\_\_\_

GPS: \_\_\_\_\_  
Closest Town: \_\_\_\_\_  
Groceries, gas, restaurants, motels, hardware stores or other impact on the town:  
\_\_\_\_\_  
\_\_\_\_\_  
\_\_\_\_\_  
\_\_\_\_\_

Other Comments for this site:  
\_\_\_\_\_  
\_\_\_\_\_  
\_\_\_\_\_  
\_\_\_\_\_

Date Filled in Form: \_\_\_\_\_

Please keep copy for your files, send a copy to [fieldtrip@amlands.org](mailto:fieldtrip@amlands.org)



# Letters to Shirley

shirley.leeson@amlands.org



Hi Shirley,  
Hope you had a great 4th. It was quite here. I told John Martin I would be the contact for CFMS PLAC for Nevada. I tried both NV/CA and it was overwhelming. He needs to have someone just for CA. I am continuing my campaign writing to Nevada legislators regarding the Fallon land grab. I am also investing the Air Force request for an additional 300,000 plus acres. I am monitoring the Federal and State legislators for anything that will affect our ability to enter state and Federal lands. I will keep you posted. Have a great day and thanks for bringing ALAA back.

ALBERT BOLSHAZY  
(ALAA State Rep - Northern Nevada)  
al.bolshazy@amlands.org

## MEMBERSHIP

Ronna Watkins

membership@amlands.org

Some of us have been busy rockhounding and have not been to, or had, a club meeting in August. My Yakima, Washington club does not meet in August. So, this is what I am leading to...as soon as you get your rocks to the club sharing table, and share about the great collecting site you came by these wonderful things at: Please bring up the ALAA.

September is a great time to get the process started for your club's renewal and to get your club members excited about keeping access open. Please let them know that individual memberships are important, too. Help us keep recreational rockhounding something to pass on to the next generation. We are asking you to get involved NOW! Please find the ALAA Membership form in this newsletter and on-line.

The ALAA is a 501(c)(4) organization. Its purpose is promoting and ensuring the right of the amateur hobby collecting, recreational prospecting and mining, and the use of public and private lands for educational and recreational purposes; and to carry the voice of all amateur collectors and hobbyists to our elected officials, government regulators and public land managers. Contributions to the ALAA are not deductible as charitable contributions for Federal Tax Purposes.

Annual Membership Fees are due on or before January 1st of each year. Membership not renewed becomes delinquent on February 15th of each year.

# News from Nevada

## A Letter to Governor Steve Sisolak

Al Bolshazy  
ALAA State Rep - Nevada  
al.bolshazy@amlands.org

Governor Steve Sisolak

State Capitol Building  
101 N. Carson Street  
Carson City, NV 89701

Re: Fallon Range Training Complex Modernization

Dear Governor Sisolak:

I wish to bring your attention to the expansion of the Fallon Range Training Complex Modernization. The Navy is requesting an additional 600,000 plus acres for training purposes. This will give them approximately 2.6 million acres under military control closing off access to the land to our citizens. (Estimated of 2.6 million acres by Friends of Nevada Wilderness)

I am fearful that our State is becoming a military state. With Groom Lake and their expansion a few years ago, NAS Fallon expansion, the Air Force requesting 300,000 plus acres in Southern Nevada and Yucca Mountain it is becoming obvious there is little regard for the citizens of our State. The Federal Government controls over 80% of our State and perhaps that is why they are using our State for military uses and radioactive waste storage.

You are fighting Yucca Mountain and I thank you for that. Just like the expansion, I feel the expansion and Yucca Mountain is a done deal. How many secrete shipments have they made and haven't told us about.

This seems to be their MO. Secrete shipments, having public comment during the height of the Christmas season, over whelming material and no time to analyze it. There were two volumes over 1500 pages. (NAS Fallon Expansion)

I and the members of Reno Gem and Mineral Society, American Land Access Association do not oppose land for training but we do oppose excess amount of land and the denial of access to areas well documented as rock collecting in various publications, camping and hunting areas.

The areas they want is part Dixie Valley north of Hwy 50, land between Hwy 839 and 361 south almost to Gabbs Nevada encompassing the Monte Cristo Range.

There are two resolutions, AJR2 and SJR3 opposing the expansion. I am in support of those resolutions.

Lastly, and sadly, I wrote to Senator Rosen and Masto giving them the information above. I have not received any correspondence or any communication from either of them. Good news, I wrote to Mark Amodei and received a letter from him. He is aware and closely monitoring the expansion. I believe he is not in favor of such a large expansion.

Thank you for your time. I know you are very busy however; this is really an important issue for all of us.

Thank you again,

Al Bolshazy  
Reno Gem & Mineral Society  
American Land Access Association

NOTE: As of the publishing of this newsletter, the Governor has not replied.



# AMERICAN LANDS ACCESS ASSOCIATION

## NEW MEMBERSHIP and ANNUAL RENEWAL FORM

**PLEASE PRINT ALL INFORMATION**

Must be postmarked by December 31<sup>st</sup> of each year

Member / Contact Name: \_\_\_\_\_  
Last First

Member / Contact Name: \_\_\_\_\_  
Last First

Organization Name: \_\_\_\_\_

Address: \_\_\_\_\_  
Street City State Zip Code

Mailing Address: \_\_\_\_\_  
(if different from above) City State Zip Code

Phone Number: \_\_\_\_\_  
Primary Secondary

Email Address: \_\_\_\_\_

Alternate Email address: \_\_\_\_\_

Member Signature: \_\_\_\_\_ Date: \_\_\_\_\_

Dues are: **New Member:**   **Donation:**    
 \$25 for an individual or couple **Renewal:**   **Amount Enclosed:** \$ \_\_\_\_\_  
 \$50 for a Club or Society

Leave a note for us:

Please check an option to subscribe to our Email   or Snail Mail   list.

Please make checks payable to: American Lands Access Association (ALAA)

Please mail this completed form along with your check to the following address:

**American Lands Access Association**  
**C/O Membership Chairman**  
**P.O. Box 54398**  
**San Jose, CA 95154**

For more information or questions, please email: [membership@amlands.org](mailto:membership@amlands.org)

ALAA is a grassroots 501(c)(4) Educational, non-profit organization. Our organization is present wherever there are hobbyists and recreational users of public lands whose interests and concerns are not being heard or are being jeopardized by proposed policy, regulation or legislation at the local, state and federal level.

ALAA Membership Renewal Form Rev. 2016

**Click on the above Membership Form to use the interactive Form  
 (Fillable when opened in Adobe Acrobat Reader)**

ALAA Editor  
2010 West Ave. K #528  
Lancaster, CA 93536-5229



.....Continued from Page 1

and our mission and a few took our application. My results were not earth shaking but it got people thinking. They now know who ALAA is, and what we do. My mission was to get more rockhounds and society members aware and talking about and to have more societies become society members of ALAA. Every society should be a member.

I am sharing this experience to show others how easy it can be to promote ALAA and to encourage others to do what I did or maybe come up with their own ideas. Start by talking to your own society; are they a Society Member. Reach out to a near-by society - at their meetings or their show, Are they a current member or never were? People and societies often let their membership lapse because ALAA is not on the top of their "think-about-list". With a little personal contact we can move it to their "take-action-list", If all of the current members and society members would make one contact, get one more person or society involved it could be the spark to start a resurgence of our mission.

## **THE BLM IS ON THE MOVE**

The **B**ureau of **L**and **M**anagement is moving its Washington, DC office to Grand Junction, Colorado. The exact time frame of the move is not known at this time. Check on the BLM Website for more information. This will make contacting the main BLM Office easier for the Recreational Rockhound.

Another BLM Move is the California Desert District office is moving from its Moreno Valley, CA location to a new office in Palm Springs, CA.