



# American Lands Access Association, Inc.

[www.amlands.org](http://www.amlands.org)

Volume 12 Issue 3

July - September 2020

## Acknowledging the Great Outdoors

Second Lady Karen Pence during her visit to the Great Smokey Mountains this year had this to say about the experience of being in nature. "Our greatest national treasures, our public lands, can be healing in these times of challenge. Not only enjoyable but good for us too. Being in nature can boost your mood and improve mental health. Spending quality time in the great outdoors reduces stress, calms anxiety and can lead to a lower risk of depression. We continue to encourage people to follow social guidelines as we open the parks in a safe and responsible way. More than ever before we must ensure that we are taking care of ourselves and that we are taking care of each other.

### ALAA Secretary

Susy Martin

[secretary@amlands.org](mailto:secretary@amlands.org)

I would like to encourage every one to actively pursue our hobby in this time of stay at home and be safe. For your own mental health this is the time to take some of your rocks from previous rock hunting times and use them in our lapidary arts projects. I have observed that when we stop using our manual dexterity in conjunction with our brain we are more subject to mental deterioration like dementia and Alzheimer disease. So make those cabochons and make jewelry. Keep up your silversmith, casting, etc. Keep those fingers moving and we will come out of this with our mental facilities and some nice work to show for it.

## NEWSLETTER DEADLINE

Articles for the NEWSLETTER are DUE to the Editor by the  
**10th of January - 10th of April - 10th of July - 10th of October**

For inclusion in each Quarterly Newsletter

Please send articles to: [editor@amlands.org](mailto:editor@amlands.org)

Please send articles in plain text, MS Word (.doc)

Pictures in jpg format at not less than 96 dpi or more than 200 dpi.

***Please do not send articles in PDF format.***

**Concerns or questions on article format please contact the editor at  
[editor@amlands.org](mailto:editor@amlands.org)**

Permission to Reprint All or Any Part of this Newsletter is Hereby Granted,  
Provided, Credits and Citations are Maintained.

Material from ALAA Newsletters may be duplicated for non-commercial purposes with appropriate credits. For commercial use, individual authors must be contacted for approval. Articles lacking bylines have been generated by the bulletin staff. Direct other questions to the Editor at: [editor@amlands.org](mailto:editor@amlands.org)

# **American Lands Access Association, Inc.**

www.amlands.org

Insert

## **News from Utah**

**Jack Johnston**

jack.johnston@amlands.org

I wrote this some time ago but now that the Dingle bill (S-47/ PL 116-9) is being enforced by the BLM I think it needs to be repeated or at least edited.  
January 9 ·

I have been trying to get four-wheelers and other groups like rock hounds, ATVs, hikers, campers, etc. together for 50 years. I have and had meetings with federal, state, county, and city agencies and also was a member of the Sierra Club and had meetings with SUWA, and Wilderness Society here in Utah. I have found the problem is us.

All of the anti-access people like SUWA, SIERRA CLUB, AND WILDERNESS SOCIETY ETC. exist because they have convinced people throughout the country that we are ruining the country and through donations, they can afford to pay lawyers over \$100,000 a year and make a living being the good guys.

We have all volunteers that burn out usually after 5 or 10 years that have to make a living and have families to take care of.

The few groups like BRC and USAALL have internal problems that make them ineffective. They also have a hard time raising money to hire professionals.

Look at the few people that have looked at this post and the post I put up about the San Rafael Swell comment period.

Not enough people care enough or believe we are losing very many roads, trails, camping, and collecting sites to worry about it.

We have lost 25,000 miles of roads in California and over 7000 miles of roads in Utah and we are going to lose more but not enough people care or believe we have a problem. I remember four-wheeling in California in 1967 and it wasn't anything like it is today. We had the freedom to go just about anywhere.

Bottom line --- Join them on as many things as you can that benefit four-wheeling but remember they are anti-access and are in the business of bad-mouthing and making a living restricting you and your lifestyle.

— at Uar Four Wheeler and Rockhound.

We must be forever vigilant because the anti-access people make their living getting money to restrict access.

# UPDATE FOR NEVADA

**Al Bolshazy**

**ALAA Nevada State Rep.  
al.bolshazy@amlands.org**

## NAS Fallon Land Grab (My term)

It appears the US Senate said "NO" to the expansion! Of course that is of today, Nothing from Congress yet. So this is some pretty good news for all of us. You know the Navy has spent millions on this expansion and, it is not over yet but we are heading in the right direction on this one but here is more...

House Armed Services Committee

The Committee has approved an amendment by Rep. Bob Bishop to give the Air Force 850,000 acres of the Desert Refuge area. The Amendment cited there would be co-management between the refuge and the military however; the military would make all the decisions. I am following up on this story. If this was not enough there is more...

Truckee Meadows Public Land Management Act!

Washoe County, Reno and Sparks have all agreed to:

Release 400,000 acres of Wilderness Study area

BLM to sell to TMPLM 1000's of acres

TNPLM then could sell the land to developers

The land is in the Northern areas of Washoe County from just north of Reno, up along the Pyramid Lake and up towards the Oregon border. The money from the sale of the land would be used by the local governments.

This is just a proposal but next year it might become a reality. This is just the tip of the iceberg. I will keep you posted.

Opinion: Selling off OUR land is not the mission of the Bureau of Land Management. Their mission is to protect our land keeping the land in trust for the citizens of this Country. Their mission is NOT to sell of land so developers can become wealthy at our expense.

Here is some good news:

Peterson Mountain Range which comprised about 16,300 acres to be kept as a "Natural Area" which means no development of any kind including roads, buildings, power lines etc. Friends of Nevada Wilderness requested BLM and Washoe County to keep Peterson Mountain Range a "Natural Area" which BLM has done, also, acquiring additional lands around the mountain range to protect the integrity of the range.

This is a very important range especially for the animal habit. It is also very important to us so we can continue rock hounding finding beautiful crystals.

Our partners in protecting our lands include RGMS, Carson City Rock Club, ALAA, CFMS, Friends of Nevada Wilderness, Paiute & Shoshone Tribes and concerned citizens.

Lastly... My statements are as accurate as possible. If I made any errors or my report is inaccurate, I will correct them ASAP.

# OREGON NEWS

**Jennifer Haley**

Oregon State Director

jennifer.haley@amlands.org

## National Park Service Proposes Improvements to Visitor Service Program

So many of us love the great outdoors. It's where we spent most of our free time when we were growing up. We've shared its earth science wonder with our own children, grandchildren and it is something we have eagerly returned to time and time again as Recreational Rockhounds. Our great American parks and public lands have always been there as a constant companion and a teaching tool throughout our lives.

Most of the time when we hear the topic of enhancing visitor experience on public lands, our recreational minds visualize projects that may improve our personal experience at those sites, updating older campsites, etc. A new proposal now open for public comment is mainly about making improvements to the regulations that govern concession vendor contracts at national park stations, Yellowstone National Park, for example.

The department of the Interior believes their proposal will create healthy competition among current and potential new vendors, which in turn will make a positive investment in park facilities due to the vendor competition. In doing so they say, it will make our experience as visitors more enjoyable.

Our national parks generate \$1.5 billion in gross revenues annually in over 100 units of the National Park Service (NPS). These concessioners bring investment, needed facilities, and recreation opportunities to national parks. They pay approximately \$135 million in fees to the NPS annually and employ more than 25,000 people. Services provided include food, lodging, gifts and souvenirs, equipment rental, marinas, transportation, guided recreation, and other visitor Services. Concessioners have used private funds to build most of the lodges and key visitor facilities in the national parks. These buildings are now government property, maintained and operated by the concessioners. However, the trend for contract terms have been shorter over time, discouraging investment. It does look like if the proposal goes into effect, costs to visitors may go up at some parks.

Within that proposal, it is being suggested that holders of the National Parks and Federal Recreational Lands Senior Pass, which is a \$80 lifetime pass for those 62 and older can buy, which provides a 50 percent discount on campground fees, may face some blackout dates during busy seasons that would prevent them from that discount. If you are interested in reading more, here's the link. (Click on the link)

<https://www.doi.gov/pressreleases/trump-administration-advances-efforts-improve-visitor-experience-national-parks>

## **Fieldtrip Journal for Public Lands**

***(Blank Forms are on Page 5 & 6)***

This is the simple Journal to document your Fieldtrip Activities and record the access routes needed to get to and from collecting sites. This data will be useful when asked to submit comments to Public Land Managers during the Public Comment Period on potential Public Land Access Closures proposals.

Your information could save your collecting sites from route closures and access restrictions.....

**ALAA – DATA BASE OF COLLECTING SITES  
BY STATES**

**PRIVATE COLLECTING SITES**

NAME OF SOCIETY/CLUB: \_\_\_\_\_

Address \_\_\_\_\_ City \_\_\_\_\_ State \_\_\_\_\_  
Zip \_\_\_\_\_

Field Trip Leader:

Name: \_\_\_\_\_ Email: \_\_\_\_\_

Phone: \_\_\_\_\_

Collected Material: \_\_\_\_\_  
\_\_\_\_\_

Name of Company, Ranch or Owner: \_\_\_\_\_

General Manager: \_\_\_\_\_

Contact Person: \_\_\_\_\_

Liability Insurance Requirement: Yes: \_\_\_\_\_ No: \_\_\_\_\_

Location (Address): \_\_\_\_\_

GPS: \_\_\_\_\_

Distance from your Club: \_\_\_\_\_

Frequency of leading trips to this location: \_\_\_\_\_

Number of attendance: \_\_\_\_\_

Day trip or Overnight: \_\_\_\_\_

Closest Town: \_\_\_\_\_

Groceries, gas, restaurants, motels, hardware stores or other impact on the town:

\_\_\_\_\_  
\_\_\_\_\_  
\_\_\_\_\_  
\_\_\_\_\_  
\_\_\_\_\_

Other Comments for this site:

\_\_\_\_\_  
\_\_\_\_\_  
\_\_\_\_\_  
\_\_\_\_\_

Date Filled in Form: \_\_\_\_\_

Please keep copy for your files, send a copy to [fieldtrip@amlands.org](mailto:fieldtrip@amlands.org)

**ALAA – DATA BASE OF COLLECTING SITES  
BY STATES  
GOVERNMENT COLLECTING SITES**

NAME OF SOCIETY/CLUB: \_\_\_\_\_

Address \_\_\_\_\_ City \_\_\_\_\_  
State \_\_\_\_\_ Zip \_\_\_\_\_

Field Trip Leader:  
Name: \_\_\_\_\_ Email: \_\_\_\_\_ Phone: \_\_\_\_\_  
Collected Material: \_\_\_\_\_  
\_\_\_\_\_

FOREST SERVICE \_\_\_\_\_ GRASSLANDS \_\_\_\_\_ BLM \_\_\_\_\_  
Did you contact District Manager? Yes: \_\_\_\_\_ No: \_\_\_\_\_ Contact Name: \_\_\_\_\_

Did you have to register your group? Yes: \_\_\_\_\_ No: \_\_\_\_\_

Routes to the exact collecting site: \_\_\_\_\_  
\_\_\_\_\_  
\_\_\_\_\_  
\_\_\_\_\_  
\_\_\_\_\_  
\_\_\_\_\_  
\_\_\_\_\_  
\_\_\_\_\_

GPS: \_\_\_\_\_  
Closest Town: \_\_\_\_\_  
Groceries, gas, restaurants, motels, hardware stores or other impact on the town:  
\_\_\_\_\_  
\_\_\_\_\_  
\_\_\_\_\_  
\_\_\_\_\_

Other Comments for this site:  
\_\_\_\_\_  
\_\_\_\_\_  
\_\_\_\_\_  
\_\_\_\_\_

Date Filled in Form: \_\_\_\_\_

Please keep copy for your files, send a copy to [fieldtrip@amlands.org](mailto:fieldtrip@amlands.org)

# Field Trips During Shut Down

**OREGON COUNCIL of ROCK and MINERAL CLUBS**

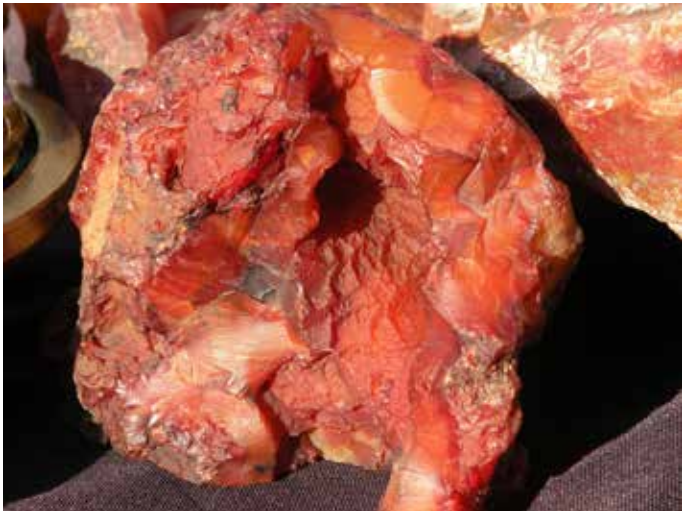
Trails End Gem and Mineral Club of Astoria, Oregon

Margie Tomlinson [kipling@pacifier.com](mailto:kipling@pacifier.com)

Our July meeting was held in Jeffers Gardens at Jeff and Trena Bainer's home and their Run Amuck Rock shop. The meeting's focus was on Jeff's incredible talents and his dream of the shop being full time. Jeff had a huge heart but in reality it was damaged due to a successful cancer fight years ago. Jeff planned this meeting in June and died two weeks later. Trena said he'd have wanted the meeting to be here. We all will miss Jeff and the professionalism and passion for the Rock Hobby he shared with us these last few years.



Our featured photo is a petrified pinecone cut slab and behind a partial view of a marvelous photo on canvas close-up of the same piece courtesy of Costco photo. I should have done a video tour.



These were all collected by Jeff from his special place. The first slab we saw before it was polished. photo does not do it justice. The inclusions are Marcasite.



*Continued on Page 8.....*



.....Continued from Page 6



We had 9 masked participants, staying within the required guidelines. We had hand sanitizer and gloves available as well. Here's a couple photos of folks appreciating all the different rock. All the landscaping is also done around Oregon rocks. Beautiful petrified woods, Thunder Eggs, Carnelian Agate, Jaspers, Picture Jaspers and much more.



And the rest of our show and tell from Logan, Anthony, Penny and Trena



Our final pictures are from individual show n tell. The meeting was to showcase all that Jeff had done. His favorite place was in his mud hole dig where so much of the carnelian agate and quartz came from all the garden rock is Oregon. Trena intends to open Run Amuck Rocks in the future and I hope we'll see her at meeting or on our page for updates.

Anthony brought local fossils from nodules he'd found and "frozen" open. Logan brought newly tumbled agates also local and super nice polish. Penney brought interesting flow quartz on matrix, two possible petrified joint bone fossils.. Trena's Spectrolite (Finish Labradorite) turned bright pink and gold later when the setting sun hit it. Wow. And the Mex. Lace sphere which I'd love to have. Thank you to everyone for a GREAT MEETING



## **A Blast From The Past**

With the onset of the Coronavirus, the closing of some of your public lands and collecting areas and with restrictions on social gathering, including fieldtrips, it has been rather difficult to report on any activities or legislative actions affecting Recreational Rockhounding. While attempting to comply with all of the unwritten laws directing our lives during the months of on and off and on again "Lock Downs" and while under House Arrest, there has been time to look through a lot of archive documents regarding Recreational Rockhounding. One of the documents discovered is a 34 page booklet on Shop Suggestions. The booklet is comprised of many, very many, suggestions on how and what to do to turn collected rocks into works of Lapidary Art. These suggestions came from many of your Club/Society Newsletters. Credit is given on each suggestion and all grammatical errors are as printed. The booklet was created on an environmentally friendly word-processing device called a Manual Typewriter in the last half of the 20th Century. So just sit back and enjoy some Recreational Rockhounding stroll down memory lane and see if you can remember any of these suggestions and maybe try some of them today. Over the next several ALAA Newsletters, with space available, the next several chapters from the booklet may appear.

Stay Safe, Keep Sane and Happy Rockhounding.

## **SHOP SUGGESTIONS**

Compiled by Bernice D. Schilling - 1975  
San Fernando Valley Mineral and Gem Society

### **"SLAB and TRIM SAWS"**

For a LUBRICANT in SLAB AND TRIM SAWS, radiator antifreeze can be used as a COOLING AGENT. It has no odor, and will not rust your saw or evaporate. In addition, it lubricates well and being very soluble in water, is easier to clean from the rocks and your hands.

....AFMS Newsletter

When CLEANING OIL FROM YOUR SLAB SAW, put a shopping bag inside another one and put them into a five gallon can. DRAIN THE OIL into the sacks. After a day or two, the oil will filter through the bags and will be clean and ready to re-use.

..... Chips and Facets

Add a couple of tablespoons of liquid detergent to your GUTTING OIL, — if your saw has a plastic lid, this will be the first time you have been able to sea through the top after cutting your slab.

.....The Tumble Rumble

After slabbing or trimming, all OIL should be removed from material by soaking in a strong solution of DISH-WASHING DETERGENT. Laundry detergents should never be used, since they all contain bleaches that will effect the color of many gemstones. Dish-washing detergents do NOT CONTAIN BLEACHES which can cause film and dullness, but rather they are made to break down oils, fats, and greases.

..... Strata Gems

When working with soft stones such as marble, onyx or Howlite, SOAK IT IN WATER a day or two before cutting it in oil. THE OIL WILL NOT SOAK IN and this will result in a much better finish when the polishing is done.

..... Breccia

CUTTING FOR "SHEEN" ON OBSIDIAN! Cut at an angle of about 50 degrees to degrees to the stripe of flow lines to insure a good sheen in the finished product.

....Rockhound's Rag

Because JADE does not have the abrasive quality of some material, it DOES NOT WEAR AWAY THE METAL BOND ON DIAMOND SAW BLADES. Consequently the BLADES GLAZE when you cut jade, and it becomes necessary to clean and dress the saw blade by cutting through a building brick or a piece of discarded 200 grit wheel.

..... Chip 'N Tumble

There are three ways to CUT PALM ROOT and each one will give a different effect. All palm root seems to have a ring of agate around the eye and a colored center. First, you can cut it right down the center. This gives the palm root a wood-grain effect that is striking but it does not show the eye. Second, you can cut squarely across the grain and bring out the round eyes. Lastly, you can cut it diagonally and get an elliptical eye effect. All will give patterns that make showy cabs.

.....The Polished Slab

Save wear and tear on your expensive diamond TRIM SAW BLADE, and cut your agate or jasper slab with a glass cutter. Use one with a carbide wheel, not tungsten, and put a, good handle on it so you can bear down hard. Use pliers to break the slab along the scored lines

.... The Agatizer

TRIM SAWING: Instead of pushing the slab into the blade and letting the oil spatter all over you — turn the whole unit around so that the saw blade rotates AWAY FROM YOU. Then stand to the back side of it and PULL THE SLAB INTO THE BLADE. You can see what you are doing better and your goggles do not get all oil splattered.

.... The Agatizer

When your wheel has worn down quite a bit, INCREASE the R.P.M. of THE MACHINE. In doing this you will compensate for wheel wear, there by maintaining grinding efficiency.

. . . . The Tumble Rumble

One excellent method used to SHARPEN SAW BLADES is to mix cement — No Sand — and water in a milk carton. Let harden and cut three or four slices to clean and sharpen the blade.

. . . . The Diggers Digest

When CUTTING PETRIFIED WOOD, cut across the grain for beauty. Sanding should always go with the grain to avoid tearing. If the grain is badly mixed, it is necessary to hand rub to polish. You can produce an excellent finish with dry crocus cloth and about an hour of hard rubbing before polishing.

....Strata Gems

In SAWING GEODES or AGATE-FILLED NODULES, first look for the largest dome on the specimen. This dome was in the upright position when the specimen was forming. Saw through this largest dome, and it is likely you will expose the best "picture" or surface. If the specimen is elongated or eggshaped, saw length wise in order to obtain the best exposure.

. . . . Rocks and Gems


Keep your DIAMOND SAW BLADE ROTATING in the SAME DIRECTION and occasionally to SHARPEN it make a couple of cuts through a piece of Obsidian.

...AFMS Newsletter

More SHOP SUGGESTIONS in the next addition of the ALAA Newsletter...

## Gem and Mineral Dealers Who Support ALAA with Memberships

*Rough and slabs for your lapidary pleasure*

**WWW. IDAHO  rock shop .COM**

We buy rocks, from small piles to whole estates  
We buy and sell used lapidary equipment

*Feel free to contact us with your special requests*

Tony and Chris Funk Tony@IdahoRockShop.com  
738 Arizona Street  
Gooding, ID 83330 208 539 5368

*Paleo-Enterprises*

*\*Where True stands for quality\**  
*Gems - Minerals - Fossils - Jewelry*  
*Decorator items and Artifacts*

**DOUGLAS & JEANETTE TRUE**  
Owners

(406) 670-0506

dtruefossils12@yahoo.com



**JL Gray Rock Shop**

**Jim & Leane Gray**

P.O. Box 1351  
Big Piney, WY 83113

614 E. 3<sup>rd</sup> Street  
Marbleton, WY 83113

(307) 260-6443  
(307) 260-6442

[graysrocks@wyoming.com](mailto:graysrocks@wyoming.com) Facebook: JL Gray Rock Shop

Rough Rock  
Slabs  
Cabs, Beads, Findings  
Vintage collectible bottles  
Bookends  
Jewelry, Belt Buckles, Bolas  
Specimens & Fossils  
Custom Cutting, Lapidary  
classes

**ROCKY FIVE**

Lon Mullaney Michelle Powers  
408-691-6186 408-694-8686

email: [rockyfive.f@gmail.com](mailto:rockyfive.f@gmail.com)

Office Phone: 408-266-1791 web site: [www.rockyfive.net](http://www.rockyfive.net)



## News from California

The best new information from California at this time is, "Just Stay Away!" With the State closing, opening and closing at the whim of the governor, the best advice is just stay away. Public Lands for Recreational Rockhounding are open for collecting, while the established camping areas are still closed. All State Parks are closed, most restaurants and stores are closed, Markets and Drive Through Fast Food establishments are open. Face Masks are required any place outside of home and any place in public. Campfire Permits are required for open fires, such as campfire, barbecues and portable stoves on federally controlled lands and private lands that are the property of another person. <http://permit.preventwildfiresca.org/> At this time all campfires, open flame devices, i.e., gas stoves, gas lanterns, charcoal BBQs, are not allowed on land managed by the BLM and USFS due to the extreme fire danger. It is advisable to check with the local BLM Field Office before venturing into the Public Lands of California for the most current information. The office maybe physically closed, but they will respond to emails and some phone calls and check their website for current information. Even though the offices are closed BLM Rangers and CA State Park Rangers are on patrol in their areas and will cite abusers for mis-conduct while in their jurisdiction. So coming to California where the grass is browner may not be the best thing to do at this time. However if you do choose to venture west or south, just remember "**Happy Recreational Rockhounding and Enjoy Your Public Lands!**"



# AMERICAN LANDS ACCESS ASSOCIATION

## NEW MEMBERSHIP and ANNUAL RENEWAL FORM

**PLEASE PRINT ALL INFORMATION**

Must be postmarked by December 31<sup>st</sup> of each year

Member / Contact Name: \_\_\_\_\_  
Last First

Member / Contact Name: \_\_\_\_\_  
Last First

Organization Name: \_\_\_\_\_

Address: \_\_\_\_\_  
Street City State Zip Code

Mailing Address: \_\_\_\_\_  
(if different from above) City State Zip Code

Phone Number: \_\_\_\_\_  
Primary Secondary

Email Address: \_\_\_\_\_

Alternate Email address: \_\_\_\_\_

Member Signature: \_\_\_\_\_ Date: \_\_\_\_\_

Dues are: **New Member:**   **Donation:**    
 \$25 for an individual or couple **Renewal:**   **Amount Enclosed: \$** \_\_\_\_\_  
 \$50 for a Club or Society

Leave a note for us:

Please check an option to subscribe to our Email   or Snail Mail   list.

Please make checks payable to: American Lands Access Association (ALAA)

Please mail this completed form along with your check to the following address:

**American Lands Access Association**  
**C/O Membership Chairman**  
**P.O. Box 54398**  
**San Jose, CA 95154**

For more information or questions, please email: [membership@amlands.org](mailto:membership@amlands.org)

ALAA is a grassroots 501(c)(4) Educational, non-profit organization. Our organization is present wherever there are hobbyists and recreational users of public lands whose interests and concerns are not being heard or are being jeopardized by proposed policy, regulation or legislation at the local, state and federal level.

ALAA Membership Renewal Form Rev. 2016

**Click on the above Membership Form to use the interactive Form  
 (Fillable when opened in Adobe Acrobat Reader)**

ALAA Editor  
2010 West Ave. K #528  
Lancaster, CA 93536-5229



Be sure to renew your ALAA  
Membership by  
December 31, 2020

---

### **Happy Birthday Bureau of Land Management!**

The bureau was established in 1946 and remains a small agency with a big job – managing more than 245 million acres of public lands for the benefit of the present and future generations.

#### **-Drones-**

The Bureau of Land Management wants you to know that if drones continue to be flown over wildfires, it is only a matter of time until a collision occurs between a drone and a firefighting aircraft. Please do not take the risk.

### **National Park Service Live Webcams**

There are Live webcams on the National Park Service websites for your viewing pleasure, without commercials! There are really fun things to watch in real time when the animals come out. There is usually something going on and sometimes there's a lot going on all at once, bears with cubs checking out a calm lake while the fish jump, native birds gliding in with a backdrop of beautiful scenery. Even when the animals aren't about and while some of us are stuck at home, these webcams are beautiful to watch and can give us a sense of calm when the world we live in seems to be filled with so much uncertainty right now.

#### **Online Recreation Resources:**

<https://www.doi.gov/recreation/online-recreation-resources>