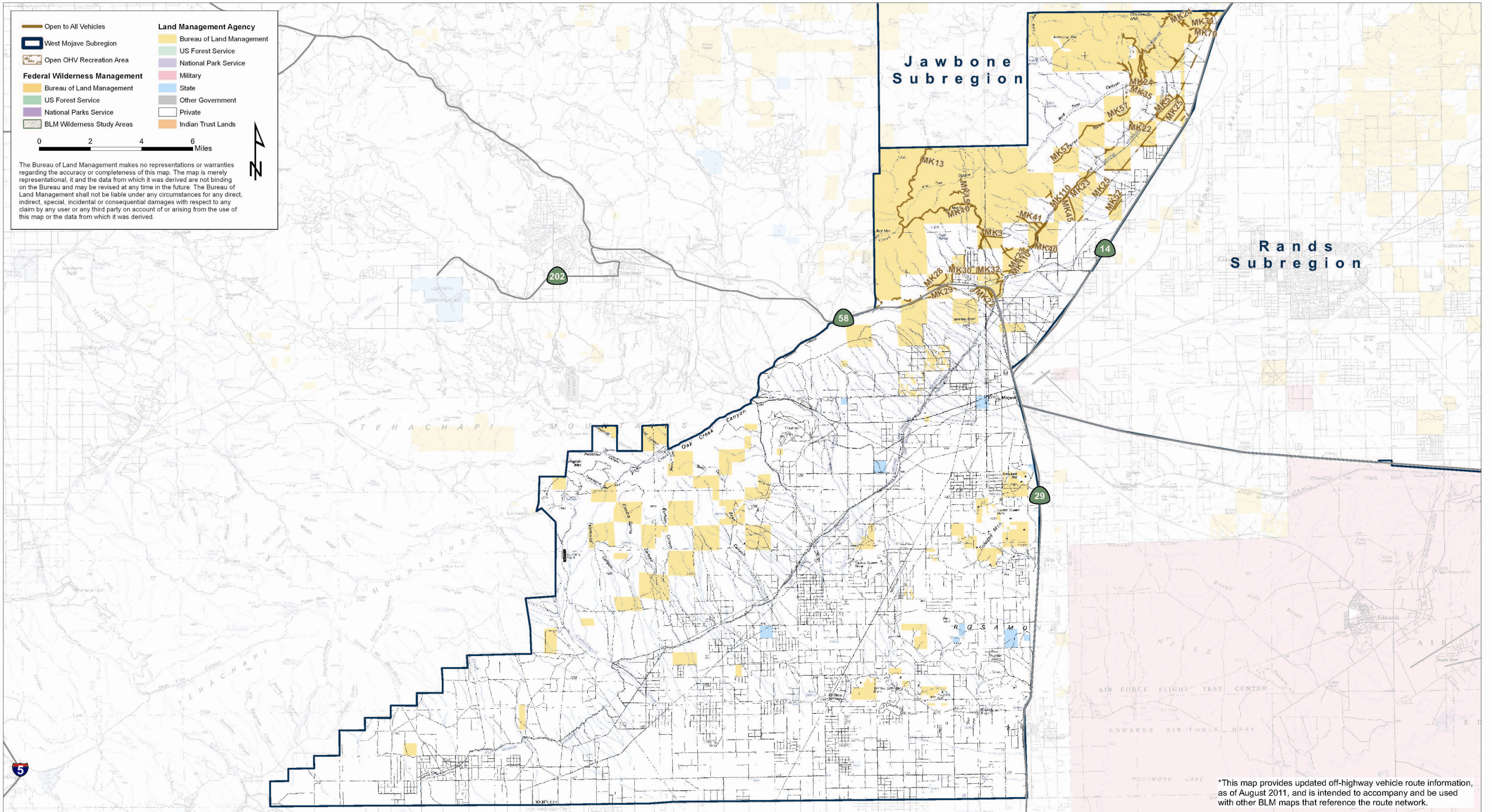




# Middle Knob Subregion

## Off-Highway Vehicle Route Supplement\*

Bureau of Land Management - California



- Open to All Vehicles
- West Mojave Subregion
- Open OHV Recreation Area
- Federal Wilderness Management
  - Bureau of Land Management
  - US Forest Service
  - National Parks Service
  - BLM Wilderness Study Areas
- Land Management Agency
  - Bureau of Land Management
  - US Forest Service
  - National Park Service
  - Military
  - State
  - Other Government
  - Private
  - Indian Trust Lands

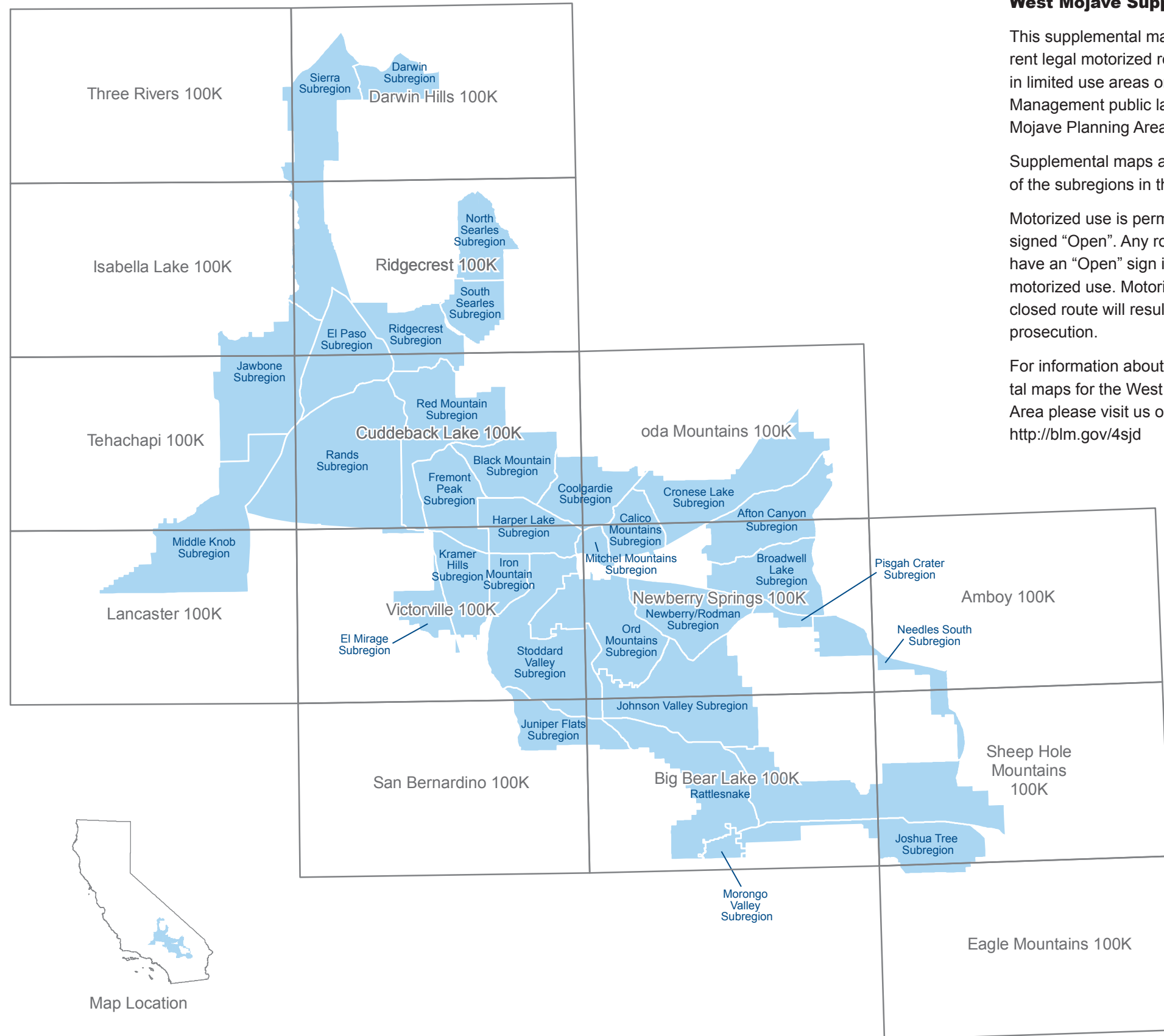
The Bureau of Land Management makes no representations or warranties regarding the accuracy or completeness of this map. The map is merely representational, it and the data from which it was derived are not binding on the Bureau and may be revised at any time in the future. The Bureau of Land Management shall not be liable under any circumstances for any direct, indirect, special, incidental or consequential damages with respect to any claim by any user or any third party on account of or arising from the use of this map or the data from which it was derived.

\*This map provides updated off-highway vehicle route information, as of August 2011, and is intended to accompany and be used with other BLM maps that reference the route network.



# Route Subregion Locator Map

A comparison of Surface Management Status 100K series maps to Off-Highway Vehicle Route Supplement maps



## West Mojave Supplemental Map

This supplemental map includes the current legal motorized road and trail network in limited use areas on Bureau of Land Management public lands in the West Mojave Planning Area.

Supplemental maps are available for each of the subregions in the planning area.

Motorized use is permitted only on routes signed "Open". Any route that does not have an "Open" sign is not legal for motorized use. Motorized use of any closed route will result in a fine or criminal prosecution.

For information about the 33 supplemental maps for the West Mojave Planning Area please visit us online at: <http://blm.gov/4sjd>



Visit [www.treadlightly.org](http://www.treadlightly.org) for tips on responsible recreational riding and remember:

- Travel responsibly
- Respect the rights of others
- Educate yourself
- Avoid sensitive areas
- Do your part

Help preserve the beauty and inspiring attributes of our lands and waters for yourself and future generations.



Follow "Leave No Trace" guidelines to minimize the impacts of your next visit to public lands:

- Plan ahead and prepare
- Travel and camp on durable surfaces
- Dispose of waste properly
- Leave what you find
- Minimize campfire impacts
- Respect wildlife
- Be considerate of other visitors

For more information visit [www.lnt.org](http://www.lnt.org)

Responsible land use depends more on your attitude and awareness than on rules and regulations.

## NOTICE

**MOTORIZED USE IS PERMITTED ONLY ON ROUTES SIGNED "OPEN." ANY ROUTE THAT DOES NOT HAVE AN "OPEN" SIGN IS NOT LEGAL FOR MOTORIZED USE. MOTORIZED USE OF ANY CLOSED ROUTE WILL RESULT IN A FINE OR CRIMINAL PROSECUTION.**



Map Location