



American Lands Access Association, Inc.

www.amlands.org

alaa@amlands.org

Volume 15 Issue 3

July - September 2023

American Lands Access Association

“Celebrating 31 years of supporting Recreational Rockhounding on Public Lands.”

The Founding of American Lands Access Association, Inc. (ALAA)

The AFMS recommended forming a separate 501(c)(4) organization whose primary purpose is to promote the amateur collectors' interests in present and proposed policies, rules, regulations and legislation with State and Federal land managers, elected officials and legislators. In compliance with that recommendation, the AFMS directors voted to establish the American Lands Access Association (ALAA) in July 1992.

American Lands Access Association

Please join us in helping to preserve Recreational Rockhounding. Together we have a much better chance of doing this if we all pull together.

If you aren't already on our email list for updates and progress reports, please let us know.

Thank you. A big thank you to all of you who are already helping to keep the enjoyment of collecting on public lands accessible now, for the future of rockhounding clubs.

www.amlands.org

Material from ALAA Newsletters may be duplicated for non-commercial purposes with appropriate credits. For commercial use, individual authors must be contacted for approval. Articles lacking bylines have been generated by the bulletin staff. Direct other questions to the Editor at: editor@amlands.org

Jennifer Haley
American Lands Access Association - Vice President
jennifer.haley@amlands.org

In August, ALAA held a meeting for rockhounds during the AFMS-NFMS Show & Convention in Billings, Montana. Members of AFMS affiliated societies from across the United States attended, including AFMS President Cheryl Neary from New York. It was great to talk to those of you who were able to travel to the event, and personally thank you for your help with the Mojave Trails National Monument issue.

We often mention the importance of creating a written or electronic record of routes and roads to your collecting areas. However, many of you have not. We encourage you as clubs to add this to your club's annual to-do list because it is equally as important.

Remember, depending on your region, some of your collecting areas are not very accessible if at all during the winter, spring and summer months due to extreme heat, storms, snow, melting of snowpack mountains, wildfire danger and desert flash floods. Sometimes the signage to your routes changes over the years due to weather, human folly or Public Land Management has made changes. Best to make sure your documenting is current while you enjoy the good weather on your field trip. What's that saying, "the best time to fix the roof is when there is sunshine." Your club's vintage field trip maps are always wonderful to look at as keepsakes, but may not be up to date any longer when it comes to the route numbers. Maybe that good old tree you used as a marker isn't there anymore, etc. This means your club may not be able to use that old information from the past, because it doesn't match what is current today.

During Billings we did have an important question come up about how best to deal with the occasional person representing themselves as a recreational rockhound, but who doesn't act appropriately at the Public Lands meetings. This means expressing themselves in bad tempered or rude ways, popping off, with the attitude the managers are the bad guys. None of this disruptive behavior helps our efforts and nor does it benefit all the hard work and accomplishments we as rockhounds have gained in our working together with management over these past several years. If you don't think we have made gains in our work together, then you haven't been paying attention.

Please remember and remind your clubs of the "last but not least" in our AFMS Code of Ethics; I will observe the "Golden Rule," will use "Good Outdoor Manners" and will at all times conduct myself in a manner which will add to the stature and public image of rockhounds everywhere. This means during public meetings also. Others and myself cannot stress this enough. As AFMS club members, we've always valued this important part of the code for decades, it's who we are and we are proud of it.

If You Find Yourself In This Situation

For those Recreational Rockhounds or Wandering Travelers whom have discovered they are beyond HOPE and are having a hard time returning.

This may help you return from Beyond HOPE.

All you have to do is follow the signs!



However, if you are not careful, you might end up in Timbuktu having to ask for directions and are still be Beyond Hope.....



Happy Rockhounding, Enjoy your Public Lands and stay safe and sane.

Ya'all come back now, Ya'Hear!

Fieldtrip Journal for Public Lands

(Blank Forms are on Page 4 & 5)

This is the simple Journal to document your Fieldtrip Activities and record the access routes needed to get to and from collecting sites. This data will be useful when asked to submit comments to Public Land Managers during the Public Comment Period on potential Public Land Access Closures proposals.

**ALAA – DATA BASE OF COLLECTING SITES
BY STATES
PRIVATE COLLECTING SITES**

NAME OF SOCIETY/CLUB: _____

Address _____ City _____ State _____
Zip _____

Field Trip Leader:

Name: _____ Email: _____

Phone: _____

Collected Material: _____

Name of Company, Ranch or Owner: _____

General Manager: _____

Contact Person: _____

Liability Insurance Requirement: Yes: _____ No: _____

Location (Address): _____

GPS: _____

Distance from your Club: _____

Frequency of leading trips to this location: _____

Number of attendance: _____

Day trip or Overnight: _____

Closest Town: _____

Groceries, gas, restaurants, motels, hardware stores or other impact on the town:

Other Comments for this site:

Date Filled in Form: _____

Please keep copy for your files, send a copy to fieldtrip@amlands.org

**ALAA – DATA BASE OF COLLECTING SITES
BY STATES
GOVERNMENT COLLECTING SITES**

NAME OF SOCIETY/CLUB: _____

Address _____ City _____ State _____
Zip _____

Field Trip Leader:
Name: _____ Email: _____ Phone: _____

Collected Material: _____

FOREST SERVICE _____ GRASSLANDS _____ BLM _____
Did you contact District Manager? Yes: _____ No: _____ Contact Name: _____

Did you have to register your group? Yes: _____ No: _____

Routes to the exact collecting site: _____

GPS: _____
Closest Town: _____
Groceries, gas, restaurants, motels, hardware stores or other impact on the town: _____

Other Comments for this site: _____

Date Filled in Form: _____

Please keep copy for your files, send a copy to fieldtrip@amlands.org

Mojave Trails National Monument Update

Gregor Lorsson
ALAA Ambassador
MTNM DAC Subgroup
gregor.lorson@amlands.org

Hello Recreational Rock Collectors,

The Mojave Trails National Monument(MTNM) Subgroup of the BLM's Desert Advisory Committee(DAC) has finalized our recommendations to the DAC. They will then consider our recommendations, and then give their recommendations to the BLM. The MTNM Subgroup has given a recommendation of "Strongly Agree" that recreational rock collecting be allowed in the MTNM, and under current regulations.

Thank you to our national organizations, their chapters and clubs, and the individuals who participated in the Scoping Period for the Mojave Trails National Monument. The MTNM management team received a large number of comments and will use them to inform their writing of the Draft Management Plan Alternatives in the spring or summer of 2024. The Alternatives will then be put out for a public comment period. Hopefully, one of the Alternatives will be satisfactory to our collecting communities. If not, we can still comment and ask for different parts of different Alternatives. But if changes are made to Alternatives, they must be put back out for comment and the Interior Department wants the plan finished before November of 2024. This shows why the last comment period was so important, so thanks again for everyone's participation.

Everyone also did a great job of sharing and interacting with the LA Times digital article, so they re-published it on the front page of the Saturday, July 29 physical paper edition, with different photos.

The next chance for you to participate will be after this winter's desert collecting, and the ALAA will send out notifications. Thank you to everyone for helping with the articles, comment period, helping move this MTNM issue, and for those keeping us informed and active. This has been an incredible response across our collecting communities so far and has been very encouraging,

Back in 2016 when the MTNM was declared John Martin, ALAA, CFMS and Recreational Rockhounds worked with the BLM and that effort has kept Recreational Rock Collecting fully legal within the boundaries of the MTNM, at least until the MTNM Management plan is finalized. For any roads to be closed in the Monument, it will most likely be through the Travel Management Process, further down the line. So we have a complete desert fall, winter, and spring season of collecting and enjoying our beautiful desert before it's time for the next comment period.

CONTACT INFORMATION FOR CONGRESS

Tips & Examples on Writing Letters to Government Officials

This information could be useful:

<http://www.amlands.org/9112/index.html>

WORKING TOGETHER, WORKS

What Other Clubs are Doing to Help Preserve Recreational Rockhounding

The Oregon Council of Rock and Mineral Clubs.

This organization has been doing such good work on the behalf of preserving Recreational Rockhounding in the state of Oregon, which is why we wanted to include an article about them. They are inspiring. They are living proof that working together, really does work.

Their work at Hampton Butte has been widely recognized by the BLM as a great example of how recreational rockhounds can demonstrate good stewardship practices on our public lands.

Since 2019 the Council has partnered with the Prineville, Oregon, BLM on National Public Lands Day (NPLD), to sponsor a reclamation project at Hampton Butte. As you probably know, this collection site is famous for green petrified wood and has been extensively dug for many years. They spend the day working to fill and level excavated areas.

Their 2022 work party was a big success with 24 participants. The Mt. Hood Rock Club took the award for best attendance with 14 members. Everyone felt their time and efforts were rewarding.

The Council will again have a work party on NPLD at Hampton Butte on Saturday, September 23, 2023. They hope for good weather and for a good turnout. The Council is very organized. They invite their member clubs to participate with details, and with reminders to follow.

The Council continues to work with BLM staff to explore options for the use of a small tractor or Bobcat at Hampton Butte, and are hoping they will have the necessary permits in time for their 2024 work party.

The Council is looking to identify another collection site that might be suitable for a Council reclamation project. One of the Councils projects is installing informational kiosks at Hampton Butte and Glass Buttes. Signage could describe the history of the site and recommend best rockhound stewardship practices (AFMS Code of Ethics).

The BLM has also invited the Council to help prepare an exhibit of Oregon rocks for their public display case at the Prineville, Oregon office. As regards to their Council's advocacy mission, they are very pleased to announce Susie Koppert (Council Director) was recently appointed to the BLM's John Day – Snake Resource Advisory Council (RAC). The RAC's purpose is to provide the BLM with input from recreational, industry and public interest groups on land use management policies. Susie has long attended RAC meetings in eastern Oregon, so her selection will bring rockhounds much needed representation in advising the BLM on a variety of issues. Among other duties, Susie

Continued on Page 8.....

will be serving on a RAC subcommittee tasked with developing a recreational rockhound management plan. Clearly this plan is of great importance to our hobby's future. Ed Anderson, another Council Director, finished his tenure on the BLM's Western Oregon RAC last year.

The Oregon Council of Rocks and Mineral Clubs and ALAA thanks both Susie and Ed for helping keep the BLM informed about rockhounds interests and making the Council relevant.

As a further Council goal, and what you as clubs in other states can begin looking at doing, is for your clubs to consider sponsoring a reclamation project of your own on a yearly basis. You could partner with your local federal agency to work for a day at one of your favorite collection sites. A good way to demonstrate responsible stewardship and showing your club members the AFMS "Code of Ethics" in action.

* This is a great success story in the making, and an excellent example to learn from for those of you who have BLMs in your state.

Excerpts from Dave Williams, President-Oregon Council of Rock and Mineral Clubs (OCRMC) newsletter. July 2023

OREGON COUNCIL OF ROCK AND MINERAL CLUBS (www.ocrmc.org)

A Bit of AFMS/NFMS Show - Billings Montana



One of the great adventures for those who traveled to the AFMS-NFMS show from other regions, was seeing the beautiful displays of Montana Bear Canyon agate, and visiting the many historical locations in and near Billings.

Pictograph Cave State Park, Billings-Mt



The American Federation of Mineralogical Societies Annual Show & Convention

“Celebrating 76 Years of bringing about a closer association of Clubs and Societies devoted to the study of the Earth Sciences and the Practice of the Lapidary Arts & Crafts.”

The opportunity to host an AFMS Show and Convention only comes around every seven years for each of its Federations. It was quite the honor for the Northwest Federation of Mineralogical Societies (NFMS) to welcome everyone from across the United States to attend the event hosted by the Billings Gem and Mineral Club in Montana.

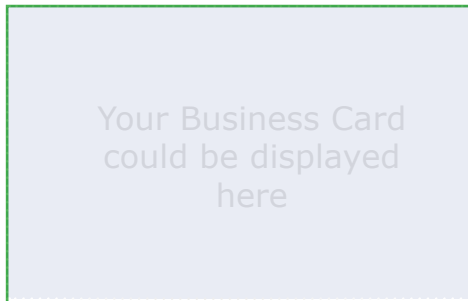
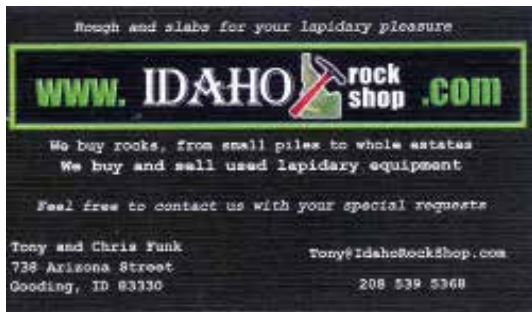


Montana is a beautiful place to visit, and a great place for rockhounding. There are so many things that are great about attending these annual events. You get to see displays and material for sale from different regions. It's a time to get to know the wonderful AFMS and Federation people dedicated to supporting your clubs with all the various contests throughout the year, and so much more. Getting to know each other is a lot of fun.

Doug True who has worn many leadership hats as AFMS and NFMS Past President and current ALAA President, led great field trips for Bear Canyon Agate and fossil fish. Everyone looks forward to a field trip with Doug, a.k.a., “The Rock Father.”

When Doug holds an Live Auction, everyone wants to be there. He always does an excellent job at these events and has donated lots of great material. The highlight at the Billings auction was Montana agate, 5 and 10 gallon buckets of Bear Canyon Agate. Proceeds of the auction benefited ALAA and NFMS. This year is also pretty special because the NFMS celebrates its 85th anniversary! *Photo-Montana Agate*

Gem and Mineral Dealers Who Support ALAA with Memberships



Are you a Rock and Mineral Dealer?
A Lapidary Arts Dealer?
Join ALAA
Your Business Card could be displayed here

We invite interested dealers/vendors to become a member of the American Lands Access Association and help support Recreational Rockhounding Activities.

An Annual Dealer Membership is for vendors with a valid resale license, who sell rock and gem hobby related merchandise such as; jewelry, minerals, rocks, gems, fossils, lapidary art and crafts, equipment and supplies, metaphysical and decorative items.

Interactive Membership Form (PDF) is available on the ALAA Website - Membership Page. Open with Adobe Acrobat Reader - Complete, Print, and mail to the address on form.

<http://www.amlands.org/634600.html>

NEWSLETTER DEADLINE

Articles for the NEWSLETTER are DUE to the Editor by the
10th of January - 10th of April - 10th of July - 10th of October

For inclusion in each Quarterly Newsletter

Please send articles to: **editor@amlands.org**

Please send articles in plain text, MS Word (.doc)

Pictures in jpg format at not less than 96 dpi or more than 200 dpi.

Please do not send articles in PDF format.

**Concerns or questions on article format please contact the editor at
editor@amlands.org**

Permission to Reprint All or Any Part of this Newsletter is Hereby Granted,
Provided, Credits and Citations are Maintained. *ALAA Does not sell Email Information.*



AMERICAN LANDS ACCESS ASSOCIATION

NEW MEMBERSHIP and ANNUAL RENEWAL FORM

PLEASE PRINT ALL INFORMATION

Must be postmarked by December 31st of each year

Member / Contact Name: _____
Last First

Member / Contact Name: _____
Last First

Organization Name: _____

Address: _____
Street City State Zip Code

Mailing Address: _____
(if different from above) City State Zip Code

Phone Number: _____
Primary Secondary

Email Address: _____

Alternate Email address: _____

Member Signature: _____ Date: _____

Dues are: New Member: Donation:
\$25 for an individual or couple Renewal: Amount Enclosed: \$ _____
\$50 for a Club or Society

Leave a note for us:

Please check an option to subscribe to our Email or Snail Mail list.

Please make checks payable to: American Lands Access Association (ALAA)

Please mail this completed form along with your check to the following address:

American Lands Access Association
C/O Membership Chairman
P.O. Box 54398
San Jose, CA 95154

For more information or questions, please email: membership@amlands.org

ALAA is a grassroots 501(c)(4) Educational, non-profit organization. Our organization is present wherever there are hobbyists and recreational users of public lands whose interests and concerns are not being heard or are being jeopardized by proposed policy, regulation or legislation at the local, state and federal level.

ALAA Membership Renewal Form Rev. 2016

**Click on the above Membership Form to use the interactive Form
(Fillable when opened in Adobe Acrobat Reader)**

ALAA Editor
2010 West Ave. K #528
Lancaster, CA 93536-5229

**H.E.L.P. ELIMINATE
LITTER PLEASE**

Remember to Renew your
ALAA Membership before
December 31, 2023



Volcano Activity Updates

USGS August 2023

Kīlauea is not erupting. Its USGS Volcano Alert level is ADVISORY.

Active lava has not been visible within Halema'uma'u crater at the summit of Kīlauea since June 19. Earthquake activity in the summit region remained elevated over the past week. Summit tiltmeters generally showed inflation over the past week. A sulfur dioxide (SO₂) emission rate of approximately 86 tonnes per day was measured on August 10.

Mauna Loa is not erupting. Its USGS Volcano Alert Level is at NORMAL.

Webcams show no signs of activity on Mauna Loa. Seismicity remains low. Summit ground deformation rates indicate slow inflation as magma replenishes the reservoir system following the recent eruption. SO₂ emission rates are at background levels.

There were four earthquakes with three or more felt reports in the Hawaiian Islands during the past week: a M3.0 earthquake 7 km (4 mi) SW of Volcano at 1 km (1 mi) depth on August 15 at 11:37 a.m. HST, a M4.3 earthquake 6 km (3 mi) WNW of Volcano at 25 km (15 mi) depth on August 13 at 1:36 p.m. HST, a M3.2 earthquake 12 km (7 mi) S of Fern Forest at 5 km (3 mi) depth on August 11 at 9:23 p.m. HST, and a M3.4 earthquake 48 km (29 mi) ESE of Naalehu at 42 km (26 mi) depth on August 11 at 10:15 a.m. HST.

HVO continues to closely monitor Kīlauea and Mauna Loa.

Please visit HVO's website for past Volcano Watch articles, Kīlauea and Mauna Loa updates, volcano photos, maps, recent earthquake information, and more.

Email questions to askHVO@usgs.gov. <https://www.usgs.gov/observatories/hvo/volcano-watch>